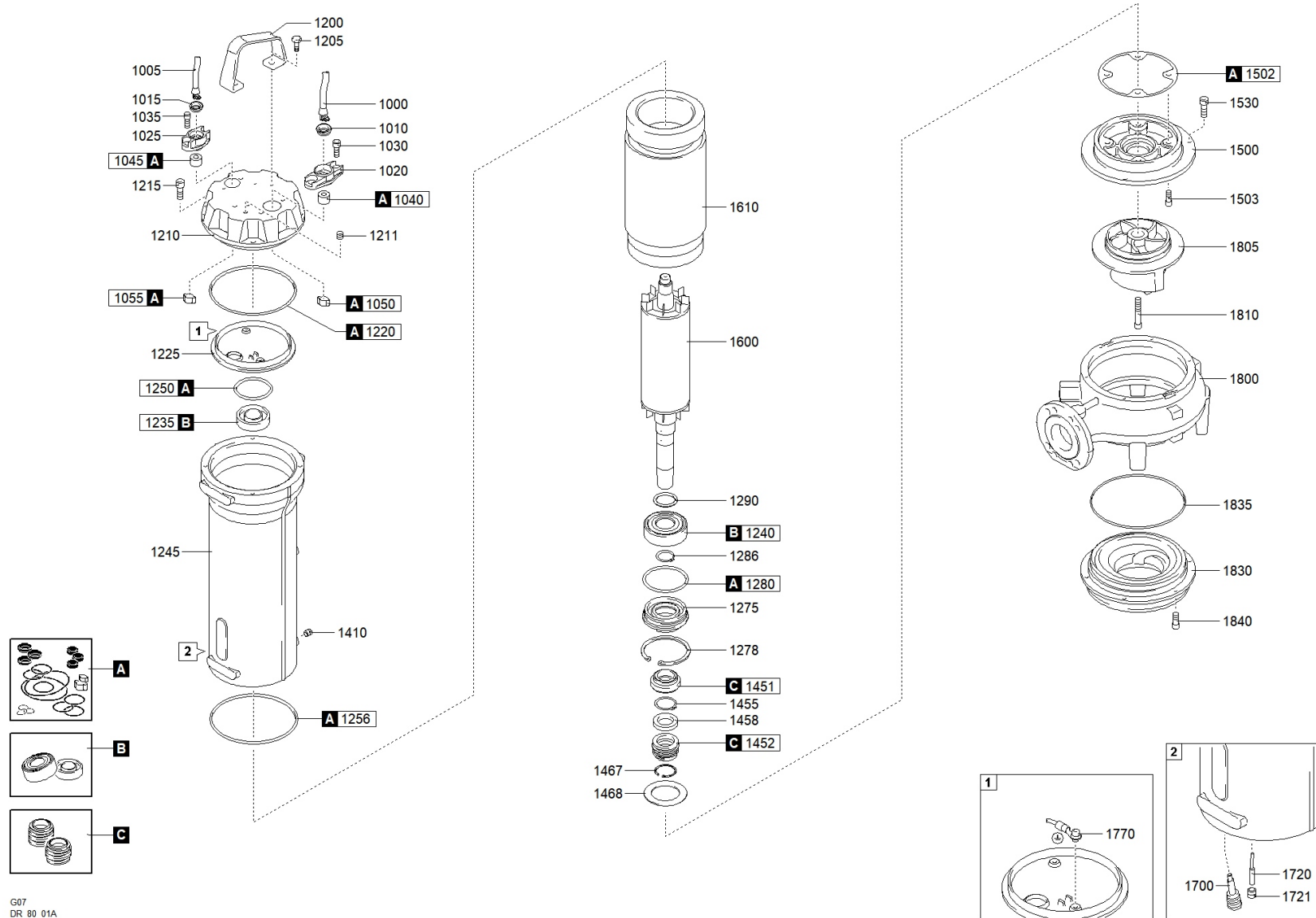




better together

1502.200 - DRG 1000/2/80 A0FT5 NGTSB51040N00EX





better together



1502.200 - DRG 1000/2/80 A0FT5 NGTSB51040N00EX

		Code	Description		Q.ty	Price (€)
A		601053001	GASKETS KIT	806126	1	
C		602053091	MECHANICAL SEALS KIT	806128	1	
B		604053001	BEARINGS KIT	806132	1	
1000		25020340151000001	CAVO POTENZA	802306	1	
1010		235467216820	RING NUT [POWER CABLE]	711016 OR 802074	1	
1020		235424018990	CABLE GLAND [POWER CABLE]	711014	1	
1030		270831010203200000	SCREW - CABLE GLAND [POWER CABLE]	711028	2	
1040		235673222050	RUBBER GASKET [POWER CABLE]		1	
1050		2732001400000	COLLAR CLAMP [POWER CABLE]	802081	1	
1200		235232426544	HANDLE		1	
1205		270830810201200000	SCREW [HANDLE >> COVER]	802319	2	
1210		2321171EX27210	COVER		1	
1211		270139510104000003	CAP [TIGHTNESS TEST]		1	
1215		270830810203200000	SCREW [COVER >> MOTOR CASE]	802093 OR 802095	6	
1220		271770151035000000	GASKET [COVER >> UPPER BEARING HOLDER]		1	
1225		230657125859	UPPER BEARING HOLDER		1	
1235		2729063050400000	UPPER BEARING	710969	1	
1240		2729063070200000	LOWER BEARING	802297	1	
1245		2310171EX28582	MOTOR CASE		1	
1250		271770061026000000	GASKET [UPPER BEARING]		1	
1256		271770145018000000	GASKET [MOTOR CASE >> PUMP PLATE]		1	
1275		23915087037027879	LOWER BEARING FLANGE		1	
1278		270320880200000	SEEGER [LOWER BEARING FLANGE]	802289	1	
1280		271770073035000000	GASKET [LOWER BEARING FLANGE]	711000	1	
1286		270330350100000	SEEGER [LOWER BEARING >> LOWER BEARING FLANGE]	802290	1	
1290		270220350452500000	DISTANCE RING [LOWER BEARING]	802312	1	
1410		270139510104000003	CAP [OIL CHAMBER]		1	
1451		230000010300000000	1st MECHANICAL SEAL		1	
1452		230001810300000000	2nd MECHANICAL SEAL		1	
1455		270330300100000	SEEGER [1st MECHANICAL SEAL >> 2nd MECHANICAL SEAL]	802102	1	
1458		23916100080027891	DISTANCE RING [1st MECHANICAL SEAL >> 2nd MECHANICAL SEAL]		1	
1467		270320620200000	SEEGER [2nd MECHANICAL SEAL]		1	
1468		270534161109027893	DISTANCE RING [2nd MECHANICAL SEAL]		1	
1500		236212003027854	PUMP PLATE		1	
1502		2750913427043	GASKET [PUMP PLATE]		1	
1503		270830810203200000	SCREW [PUMP PLATE >> MOTOR CASE]	802093 OR 802095	6	
1530		270830810203200000	SCREW [PUMP PLATE >> PUMP BODY]	802093 OR 802095	6	
1600		2302351132EX27842	SHAFT WITH ROTOR		1	

1610	231101323024000000	WOUND STATOR		1
1700	25072200000000	HUMIDITY PROBE [OIL CHAMBER]		1
1770	2500000001800072	GROUND CABLE CONNECTOR		1
1800	21251020030527625	PUMP BODY		1
1805	21411OC160NN27609	IMPELLER		1
1810	270831010453200000	LOCKING IMPELLER		1
1830	2162120027632	SUCTION FLANGE		1
1835	2750920022190	GASKET [PUMP BODY >> SUCTION FLANGE]	710949	2
1840	270830810203200000	SCREW [SUCTION FLANGE >> PUMP BODY]	802093 OR 802095	6